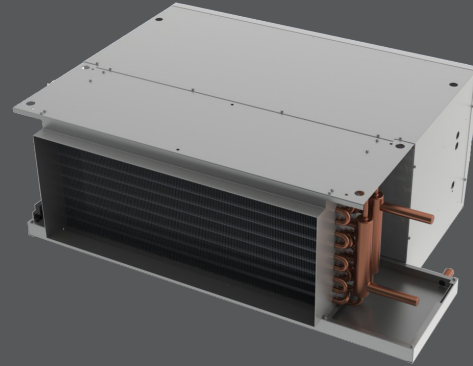


HHP

- Performance AHRI Certified to Standard 440
- ETL-Listed. Constructed in compliance with ANSI/UL 1995 Standard
- Casing sheet metal components fabricated of 18GA G90 galvanized steel
- Return air plenum thermally and acoustically insulated covering the motor(s)/blower(s) assembly to reduce sound levels from the unit
- High-efficiency 3-row coil suitable for a 2-pipe system
- Coil manual air vent
- 1" thick disposable filter
- Filter removal from LH or RH sides
- Multi-speed motor(s) of the permanent split capacitor (PSC) type
- Double Width Double Inlet (DWDI) direct driven blower(s) of the whisper quiet type
- Controls installed in a single control box suitable for single power supply
- Single wall condensate pan in galvanized steel, thermally protected on the outside*
- 1" discharge air flange
- 1" return air return air flange



HHP

- Anti-vibration mounts for field installation



apartments

hotels / motels

AVAILABLE MODEL:

HHP

OVERVIEW

Factory assembled, horizontal blow-thru, ducted high-output HHP fan coils are designed for concealed installations above ceilings with ducted return and discharge air for projects such as hotels, motels, condominiums and general commercial applications.

OPTIONAL FEATURES INCLUDE

- 4-, 5- And 6-row coils for 2-pipe systems
- Single block 2, 3, 4 and 5 rows CW with 1 row re-heat or pre-heat coils for 4-pipe system applications (5 rows max)
- Single block 2, 3 and 4 rows CW with 2 rows re-heat or pre-heat for 4-pipe system applications (5 rows max)
- LH or RH entry pipe connections
- Filter option include:
 - » 1" high-efficiency pleated filters
 - » 1" washable filters
- Bottom or rear return air and filter location
- Filter supports with slides or clips
- Vertical removal of filter on return air installations
- Cabinet liner in 1/2" foil face
- Motor(s) voltage suitable for 208V, 230V or 277V/1Ph/60Hz power supplies
- Motor in-line quick disconnect(s) (Rear return air option only)
- Thermostat and Accessories [Accessories on page V71]



See website for Specifications

- Single power supplies disconnect switch and fuses
- Automatic 2-pipe changeover switch for heating and cooling applications
- Electric heaters
- HW standby electric heater auto changeover switch
- Valve Packages [Accessories on page V71]
- Condensate pan options:
 - » Single wall condensate pan manufactured in 20GA 304 Stainless Steel
 - » Double wall construction consisting of outer and inner skins
 - » Condensate pan overflow safety switch



A Participating Corporation in the
AHRI 440 Certification Program